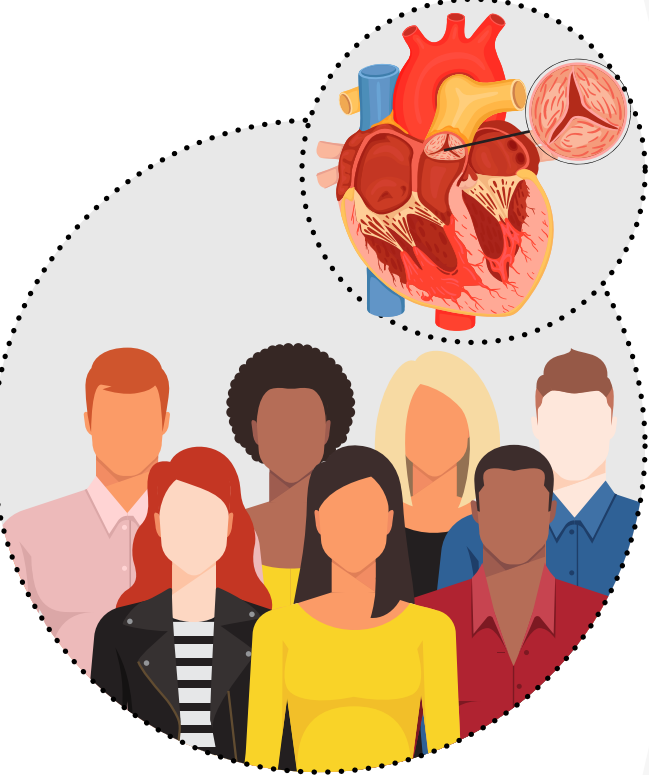


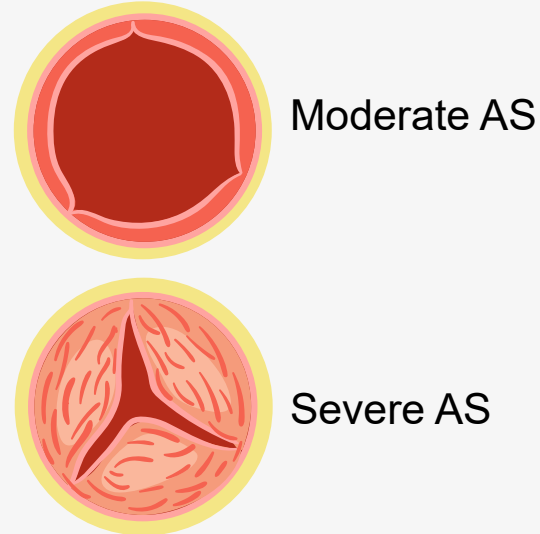
# Impact of Supranormal Left Ventricular Ejection Fraction (LVEF) in Aortic Stenosis: Mortality and Heart Failure Prognosis

Retrospective cohort study

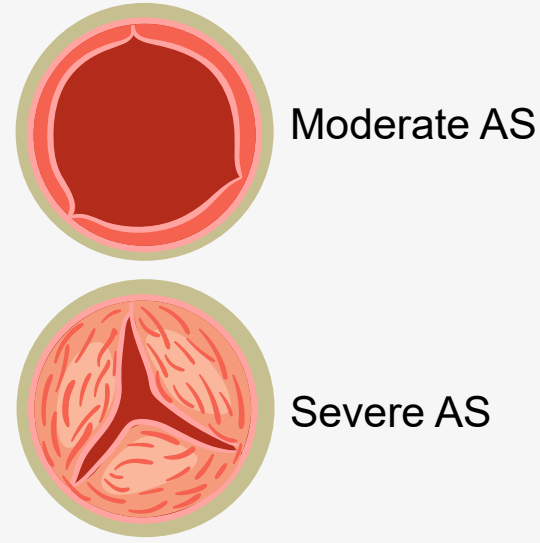


Patients with aortic stenosis (AS) and LVEF >50% (N = 226)

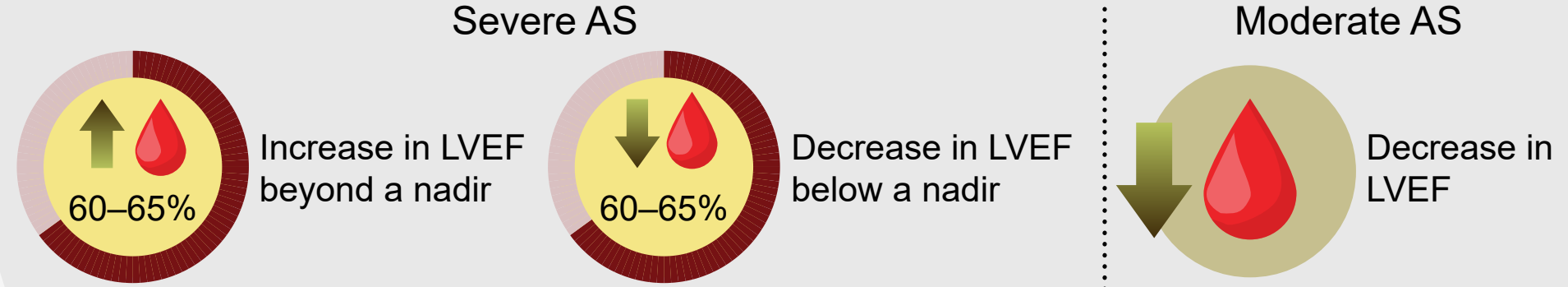
Supranormal LVEF



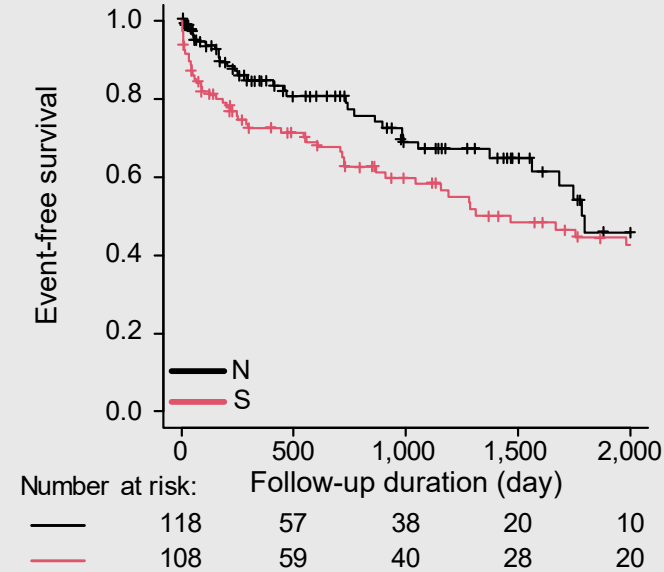
Normal LVEF



Heart failure (HF) hospitalization increased with:



HF hospitalization was notably higher in the snEF group



No significant differences observed in the primary composite outcomes of all-cause or cardiovascular mortality among the four groups

snLVEF in patients with AS does not affect mortality but correlates with a higher risk for HF hospitalization compared to nLVEF